

Welcome

Redlands College is a Christ-centred learning community committed to academic excellence and the pursuit of flourishing in all areas of student life.

Our Prep-Year 12, coeducational community of 1300 students and 200 staff embrace an intentional focus on quality teaching and learning, as we seek to challenge students and equip them to live a life of significance and positive influence on humanity.

The holistic College curriculum incorporates academics, vocational education, creative arts, performance music, sport, outdoor education and Christian character development, to ensure a broad suite of opportunities for students to engage and experience success.

This annual report presents an overview of the students, staff, culture and curriculum which articulate the uniqueness of an education at Redlands College. Thank you for being an active participant in this community as we strive together for Christ-centred excellence.

Dr Andrew Johnson
Principal



Principal

Dr Andrew Johnson
ajohnson@redlands.qld.edu.au

Board Chair

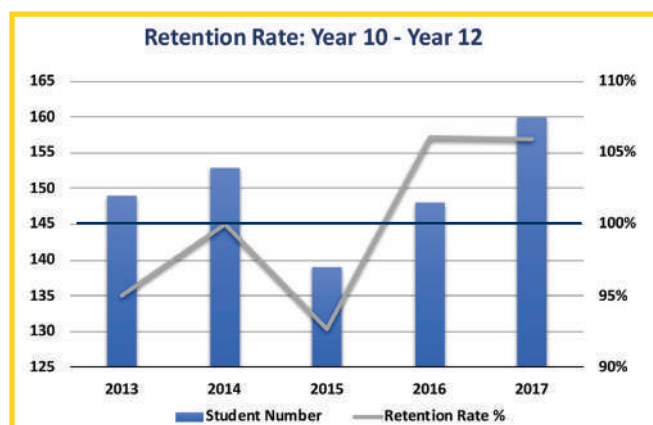
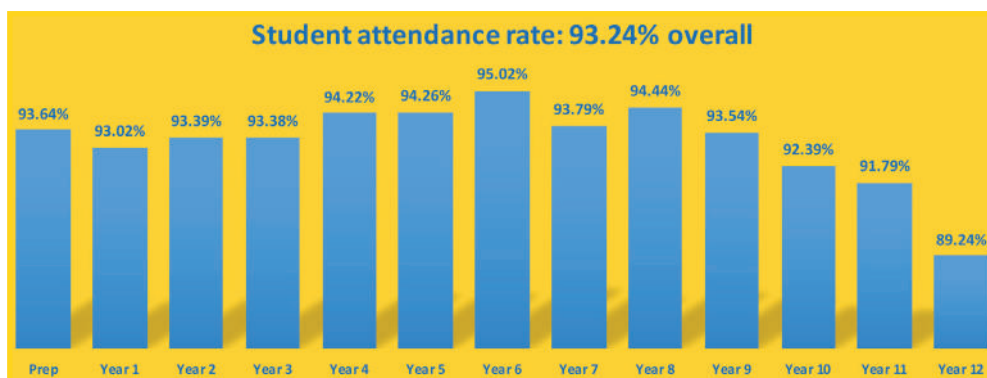
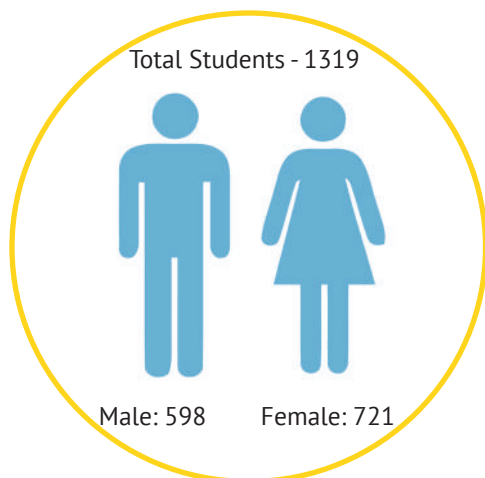
Mr Jamie Ware
jamieware@redlands.qld.edu.au

APRIL 2018

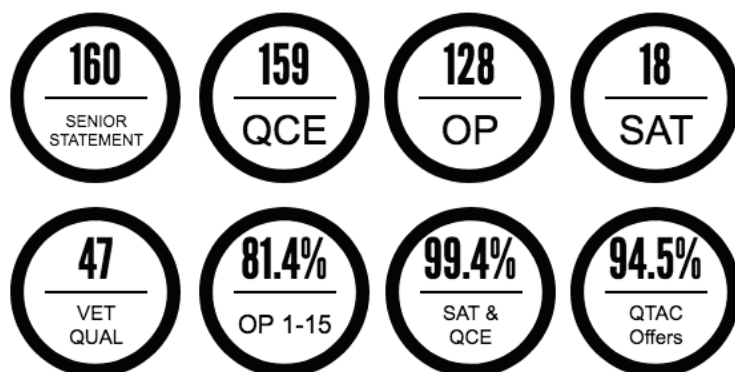


Annual Report 2017

Students



Year 12 Outcomes
Cohort - 160



2017 NAPLAN Results

Year 3	Redlands Average	National Average	% at or above National minimum standard
Reading	437	431	98.2
Writing	421	414	100
Spelling	411	416	96.4
Grammar	453	439	96.4
Numeracy	419	409	100

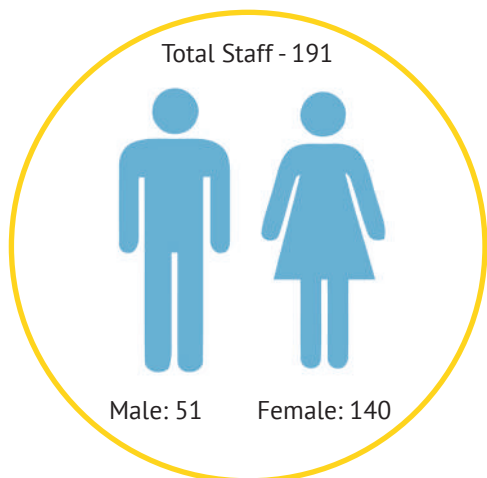
Year 5	Redlands Average	National Average	% at or above National minimum standard
Reading	549	506	100
Writing	485	473	95.2
Spelling	514	501	100
Grammar	542	499	98.8
Numeracy	522	494	100

Year 7	Redlands Average	National Average	% at or above National minimum standard
Reading	570	545	100
Writing	533	513	97
Spelling	561	550	99.2
Grammar	568	542	97.7
Numeracy	580	554	100

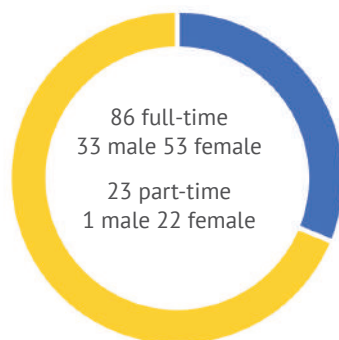
Year 9	Redlands Average	National Average	% at or above National minimum standard
Reading	610	581	98.6
Writing	586	552	92.9
Spelling	595	581	98.6
Grammar	604	574	97.9
Numeracy	614	592	100

Redlands Above National Average

Staff

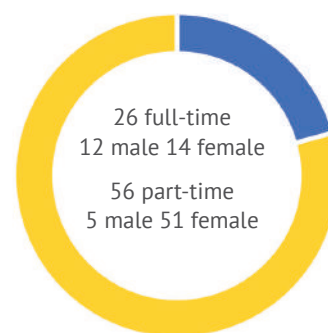


Total Teaching Staff - 109

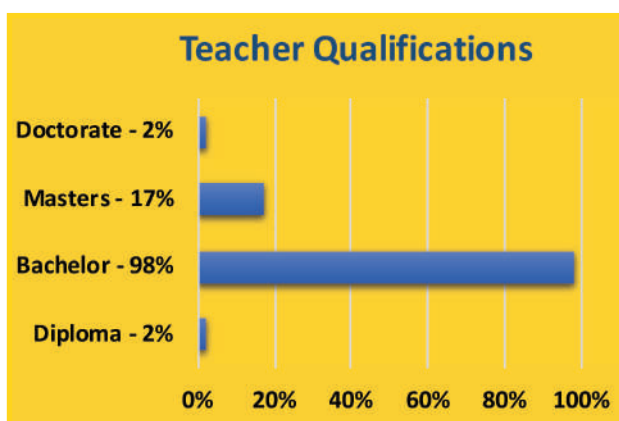


■ Male - 34 ■ Female - 75

Total Non-Teaching Staff - 82



■ Male - 17 ■ Female - 65

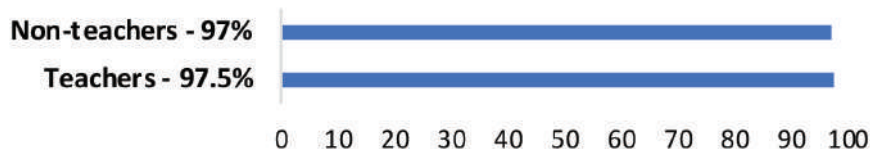


Professional Development



Top 5 PD Sessions: Assessment Design & Moderation
Syllabus Development
ICT
Literacy & Numeracy
Leadership

Average Staff Attendance Rate





Annual Report 2017

Culture



Christian faith

- All aspects of the College community, from the employment of practising Christian staff to the worldview underlying the curriculum, is informed by our Christian faith.
- **Chaplaincy:** Our Chaplains offer support in personal, family, academic and relationship matters, encouraging students through a Biblical perspective to education and vocation
- **Vertical Pastoral Care:** Students in Years 7-12 form gender-streamed vertical pastoral care classes, to facilitate intentional relationships and support networks during their educational journey.
- **House Groups:** Students join one of four houses, which provide the framework for sporting, cultural and missional interaction and competition.
- **Responsible Thinking Program:** Our approach to behaviour management which promotes responsibility for each student's actions, awareness of impact on others and reconciliation.

Parental Involvement

- **P&F:** Parents meet monthly for the purpose of facilitating opportunities for interaction within the community and to develop College spirit.
- **Performance Music Supporters Group** promotes an active interest in performance music.
- Parents are regularly invited to participate in focus groups and workshops with College leadership staff to provide feedback and suggestions related to educational and strategic aspects of the College.

Governance

- Redlands College was birthed in the faith tradition of Churches of Christ and continues to be owned and governed from this faith heritage. The College is owned by an Association called Redlands Combined Independent College Inc comprised of current members of autonomous Churches of Christ. The Board of Management are elected from this Association. The College Board provides governance, spiritual oversight and strategic vision for the College and works in close partnership with the College Principal and Executive staff.

Financial Data

- At Myschool website <http://www.myschool.edu.au/>

Curriculum

The College is structured in 3 sub-schools with a unique focus for each school:



Distinctive Curriculum Offerings

- **Individualised learning pathways** are provided for students in Senior School, as they choose from:

23
QCAA subjects

SCHOOL BASED
apprenticeships & traineeships

VET
registered components

- **Learning Enrichment Programs**

Performing Arts

Dance	Action Song	Big Band	Chamber Singers
College Strings	Chorale	Chorus	College Singers
Drama	Jazz Ensemble	Junior School Choir & Strings	Middle School Choir & Strings
Music Extension	Senior Strings	Singing Club	String Ensemble
Symphonic Band	Wind Ensemble	Wind Orchestra	Year 5 Band

Sport

Basketball	Cricket	Cross Country	Hockey
Netball	Soccer	Softball	Squash
Swimming	Tennis	Touch Football	Volleyball

Co-Curricular

Chess Club	College Magazine	Computing Club	Debating
The Duke of Edinburgh's Award	Maths Enrichment	Public Speaking	RIZN
Esports	Outreach & Service opportunities	Mission Trips	Academic Tutoring

Student Participation in Extra-Curricular Activities:

